





# Flex.Telnet V3.1 Help Manual

---

## TABLE OF CONTENTS:

<b>PREFACE</b> .....	<b>5</b>
RELATED DOCUMENTS .....	5
SOFTWARE INFORMATION .....	5
CONVENTIONS .....	5
MOUSE CONVENTIONS .....	5
<b>1 INTRODUCTION</b> .....	<b>5</b>
<b>2 USING THE FLEX.TELNET PROGRAM</b> .....	<b>5</b>
2.1 STARTING THE FLEX.TELNET PROGRAM.....	5
2.2 FLEX.TELNET APPLICATION WINDOW.....	5
2.2.1 Flex.Telnet Title bar .....	5
2.2.2 Status Bar .....	5
2.2.3 Using Flex.Telnet windows .....	5
2.2.3.1 About moving windows .....	5
2.2.3.2 About using scroll bars .....	5
2.2.3.3 About minimizing and restoring the application window.....	5
2.2.3.4 About entering data and making choices .....	5
2.2.4 Configuring the application window .....	5
2.2.4.1 Screen size section.....	5
2.2.4.2 Terminal-specific options section.....	5
2.2.4.3 Application options section .....	5
2.2.5 Setting the font.....	5
2.2.6 Setting the Language.....	5
2.2.6.1 Enable product interface language translation section .....	5
2.2.6.2 Advanced settings section .....	5
2.2.7 Toolbars .....	5
2.2.7.1 Opening and closing toolbars .....	5
2.2.7.2 Moving Toolbars .....	5
2.2.7.3 Selecting a Font size using the Toolbar .....	5
2.2.8 Exiting Flex.Telnet .....	5
2.3 HOST CONNECTION AND DISCONNECTION .....	5
2.3.1 Connecting to the remote Host.....	5
2.3.1.1 Logging on.....	5
2.3.2 Recent Hosts .....	5
2.3.3 Confirming connection to FTP .....	5
2.3.4 Disconnecting from the remote Host .....	5
2.3.5 Logging the Flex.Telnet session .....	5
2.3.6 Executing a Script file .....	5
2.3.7 Resetting the Terminal.....	5
2.3.8 Clearing the screen.....	5
2.3.9 Flex.Telnet Usage options .....	5
2.3.9.1 List of Usage options .....	5
2.4 PRINT FUNCTIONS .....	5
2.4.1 Printing.....	5
2.4.2 Print Preview.....	5
2.4.3 Printer setup.....	5
2.5 DOWNLOADING AND UPLOADING FILES .....	5
2.5.1 Editing FTP files.....	5
2.5.2 Exploring FTP Folders and Files .....	5
2.6 EDITING REMOTE FILES .....	5



- 2.6.1 Copying screen contents to the Clipboard.....5
- 2.6.2 Pasting contents of Clipboard.....5
- 2.7 HELP INFORMATION .....5
  - 2.7.1 Help.....5
  - 2.7.2 About Flex.Telnet.....5
- 3 MENUS .....5**
  - 3.1 FILE MENU .....5
  - 3.2 EDIT MENU .....5
  - 3.3 VIEW MENU .....5
  - 3.4 CONTROL MENU .....5
  - 3.5 TOOLS MENU .....5
  - 3.6 OPTIONS MENU .....5
  - 3.7 HELP MENU .....5
- 4 DIALOG BOXES.....5**
  - 4.1 EXECUTE SCRIPT DIALOG BOX.....5
  - 4.2 LOG SESSION DIALOG BOX .....5



## Preface

Flex.Telnet is part of the Flex.Win suite of programs and allows you to connect to and gain access to the operating environment of a remote RealFlex QNX server (Host).

## Related documents

The following documents are related to the use of the Flex.Telnet program.

- Flex.View Getting Started.
- Flex.View Help Manual, document reference 5000-0001-0040.
- Flex.Builder Help Manual. Document reference number 5000-0001-0041.
- Flex.Gallery Help Manual. Document reference number 5000-0001-0042.
- Flex.Start Help Manual. Document reference number 5000-0001-0043.
- Flex.Language Help Manual. Document reference number 5000-0001-0044.
- Flex.Converter Help Manual. Document reference number 5000-0001-0045.
- Flex.CFE Help Manual. Document reference number 5000-0001-0060.

## Software information

This Help Manual describes facilities contained in the Flex.Telnet application program, version 3.1.



## Conventions

The following conventions are used throughout this document:

➔ **The beginning of a sequence of instructions:**

1, 2, 3 etc. A set of steps in a sequence of instructions.

- A single step in an instruction.

**Highlight** This term defines the action of moving the cursor to illuminate an alphabetic or numeric character, word or phrase to initiate a procedure.

**OR:** In a sequence of instructions the text OR: is used to indicate a choice of steps. Either execute the one step before the OR: or the one step after it.

## Mouse conventions

Within the text the left mouse button is assumed for all mouse operations unless otherwise stated.

**Click** Press and release the mouse button without moving the pointer. This action is used to select an object or perform an action.

**Double-click** Press and release the mouse button twice in quick succession.

**Drag** Press the mouse button without releasing it and then move the pointer. This action tracks the position of the mouse pointer. The action ends when the mouse button is released.

**Press** Press the mouse button without releasing it. This action is generally used to select an object for action.

**Release** Release the mouse button after pressing it. This action is generally used to conclude an action initiated by a press or a drag.



# 1 Introduction

---

Flex.Telnet is part of the Flex.Win suite of programs and allows you to connect to and gain access to the operating environment of a remote RealFlex QNX server (Host).

The Flex.Telnet program can be run on any Microsoft® Windows PC located anywhere in the world, requiring only a TCP/IP connection to the RealFlex QNX server.

**The File menu:** The selections available from the "File" menu provide the primary methods for connecting to and disconnecting from the remote Host, Print functions and the ability to exit from the Flex.Telnet program.

**The Edit menu:** The selections available from the "Edit" menu allow you to copy the content of the entire screen onto the Clipboard and paste a copy of the Clipboard contents into the Flex.Telnet screen.

**The View menu:** Options from the "View" menu allow you to show or hide the Toolbars and Status bar.

**The Control menu:** Options from the "Control" menu allow you to clear the contents of the screen, send a "logical" break to the FTP session, check to see if the "IP address" and "Port" you are using is able to connect to FTP and reset communication settings.

**The Tools menu:** Options from the "Tools" menu provide the primary methods for viewing and editing files. Options available allow you to copy, rename and search for files and folders on the remote Host or on your PC, retrieve a file from the remote Host and place the contents of the file into your chosen External Editor program ready for viewing and editing, record the current Flex.Telnet session to a file on your hard drive and execute a "Script file" or "QNX command instruction file".

**The Options menu:** Options from the "Options" menu allow you to set the general properties of the Flex.Telnet application window, set the default font size and color and the screen background color, choose and specify a product specific language translation for use within Flex.Telnet.

**The Help menu:** Options from the "Help" menu allow you to link to the on-line Help topics and display Flex.Telnet program information.





## 2 Using the Flex.Telnet program

---

### 2.1 Starting the Flex.Telnet program


**Note:** You must be connected to your Internet Service Provider (ISP) before starting the Flex.Telnet program.

➔ **To start Flex.Telnet:**

- Double-click on the Flex.Telnet icon on your Desktop.



OR:

1. Click on the  button.
2. Select **Programs**, then **Flex.View**, and then click on **Flex.Telnet**.

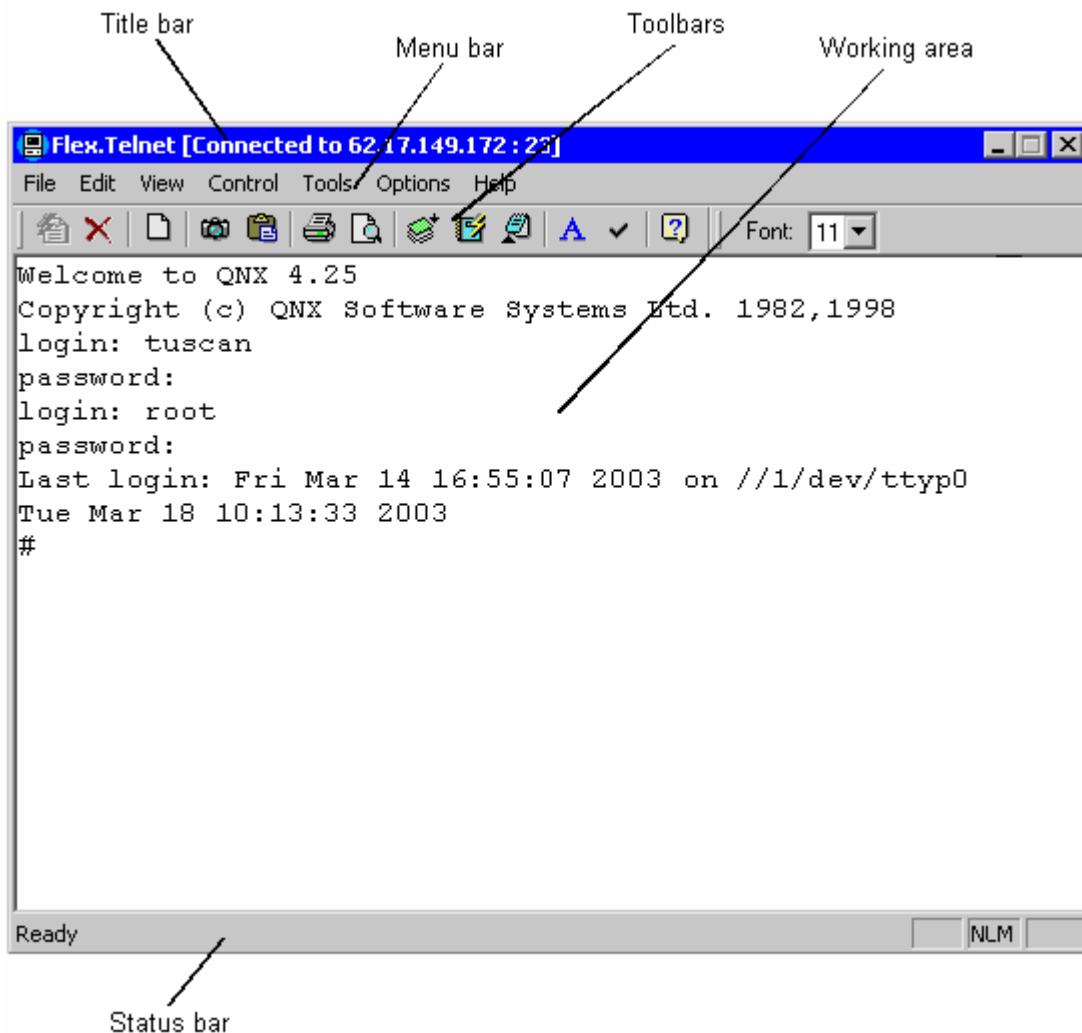
OR:

- From Windows Explorer, double-click on the **FTN.exe** file in the C:\Program Files\Datac\Flex.View directory.

When Flex.Telnet has started the "Flex.Telnet application window" is displayed.

## 2.2 Flex.Telnet application window

When Flex.Telnet has started, the Flex.Telnet application window is displayed where all operations are centred:




### 2.2.1 Flex.Telnet Title bar



The Title bar is located along the top of a Flex.Telnet application window. It contains the name of the application program and the connection details, either "<disconnected>" when there is no connection, or the Host name or IP address and port number of the Host you are connected to.

On the right-hand side of the title bar there are the following buttons:

 Minimize button

 Maximize button. **Note:** This button is disabled. See Section 2.2.3.3, "About minimizing and maximizing the application window".

 Close button



## 2.2.2 Status Bar

The "Status Bar" option from the "View" menu allows you to display or hide the Status Bar. The status bar is displayed at the bottom of the Flex.Telnet application window.



The left area of the status bar describes actions of menu items as you use the arrow keys to navigate through menus. This area similarly shows messages that describe the actions of toolbar buttons as the pointer is moved over them.

The area on the right of the status bar displays the following information:

**CAP** Indicates the Caps Lock mode status. Press the **Caps Lock** key to turn the mode on or off. When this mode is on, **CAP** is displayed.

**NUM** Indicates the Number Lock key status. Press the **NUM LOCK** key to turn the mode on or off. When this is on, **NUM** is displayed.

### ➔ To display or hide the status bar:

- From the **View** menu, select the **Status Bar** option. A check mark appears next to the menu item when the Status Bar is displayed.

## 2.2.3 Using Flex.Telnet windows

Depending on the tasks you do, you may need know about the basic window operations when using Flex.Telnet. The following subjects can help you.

### 2.2.3.1 About moving windows

During the operation of Flex.Telnet, you may find it useful to move a dialog box or window to a different location on the screen.

#### ➔ To move a window:

- Click on and drag the window title bar.

### 2.2.3.2 About using scroll bars



Some of the windows or drop-down lists used by Flex.Telnet have scroll bars. These are graphical objects along the side and/or bottom of a window, which can be used to move the contents of the window so that a different portion of the contents may be viewed.


To scroll a line or column at a time, click on one of the small triangles in the control button of the scroll bar.

To scroll a page at a time, click on the bar itself.

To scroll to a specific portion of the display, place the cursor on the slider in the middle of the bar, press and hold down the select button on the mouse, and drag the slider button along the scroll bar, releasing the select button when the desired location is reached.

### 2.2.3.3 About minimizing and restoring the application window

#### ➔ To minimize the Flex.Telnet application window:

- Click on the  (Minimize) button in the upper right-hand corner of the title bar.

Use this command to reduce the window to an icon in your Windows Task Bar, similar to the one shown below.



#### ➔ To reopen (restore) the Flex.Telnet application window:

- Click on the icon, or right-click on the icon and select **Restore** from the pop-up menu.


### 2.2.3.4 About entering data and making choices


While using Flex.Telnet you will enter data and make choices in a number of different ways. The most common methods are described here. For specific details of data entry refer to the help information corresponding to the required task.

There are two buttons that appear on most data input windows:

**OK** - If you click on OK after you have input data to a window the data is saved.

**Cancel** - If you click on Cancel after you have input data into a window the data is not saved and you are returned to the previous window.

Some data input windows have spinner buttons  for selecting items for further definition. If you click repeatedly on the up or down arrow button the selection will appear in the field to the left of the arrows in ascending or descending order as appropriate. The spinners also respond to the keyboard up and down arrows.

Some fields have a down arrow  button. Clicking on this button will display a drop-down list of choices.

## 2.2.4 Configuring the application window

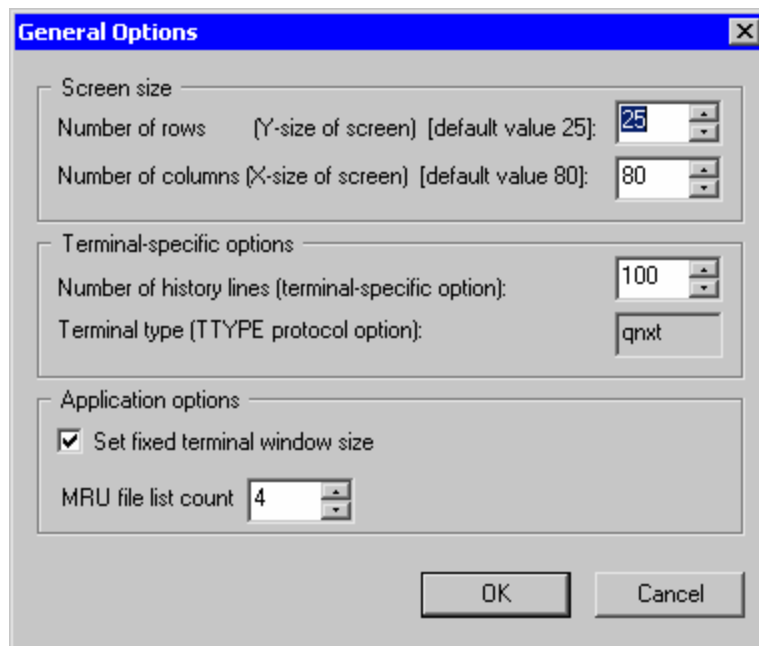
The "General..." option from the "Options" menu allows you to set the general properties of the Flex.Telnet application window.

### ➔ To access the General Options window:

- From the **Options** menu, select the **General...** option.

**Shortcuts:** Toolbar  Keypad **Alt+Shift+O**

The "General Options" window will appear:



The "General Options" window is divided into three sections; "Screen size", "Terminal-specific options" and "Application options".

### 2.2.4.1 Screen size section

The significance of each field is as follows:

**Number of rows** - Sets the number of visible lines of data. May be set between 25 and 128 (Default 25).

**Number of columns** - Sets the number of visible columns. May be set between 80 and 160 (Default 80).

### ➔ To change the number of rows or columns:

- Double-click on and highlight the current figure in the required field and type in the new figure.

OR:

Click on the  spinner buttons to select a new figure.

### 2.2.4.2 Terminal-specific options section

The significance of each field is as follows:

**Number of history lines:** - During a session, this is the number of commands that can be retrieved by hitting the "up arrow" key. May be set between 0 and 999 (Default 100).

#### ➔ To change number of history lines:

- Double-click on and highlight the current figure in the field and type in the new figure.

OR:

Click on the  spinner buttons to select a new figure.

**Terminal type:** - Defines the windows functionality and look. This is fixed and cannot be changed.

### 2.2.4.3 Application options section

The significance of each option is as follows:

**Set fixed terminal window size:** - Allows you to resize the Flex.Telnet application window so that it fits within the viewing area of your monitor. Click on the check-box to activate. A tick will appear when enabled. Click again to disable (no tick).

**MRU file list count:** - Allows you to define the number of Host names or addresses in the "File" menu, "Most Recently Used" list. May be set between 0 and 16 (Default 4).

#### ➔ To change number of names

- Double-click on and highlight the current figure in the field and type in the new figure.

OR:

Click on the  spinner buttons to select a new figure.

After all changes have been made to the "General Options" window, click on the **OK** button to save your changes, or click on the **Cancel** button to close window and not save changes.

## 2.2.5 Setting the font

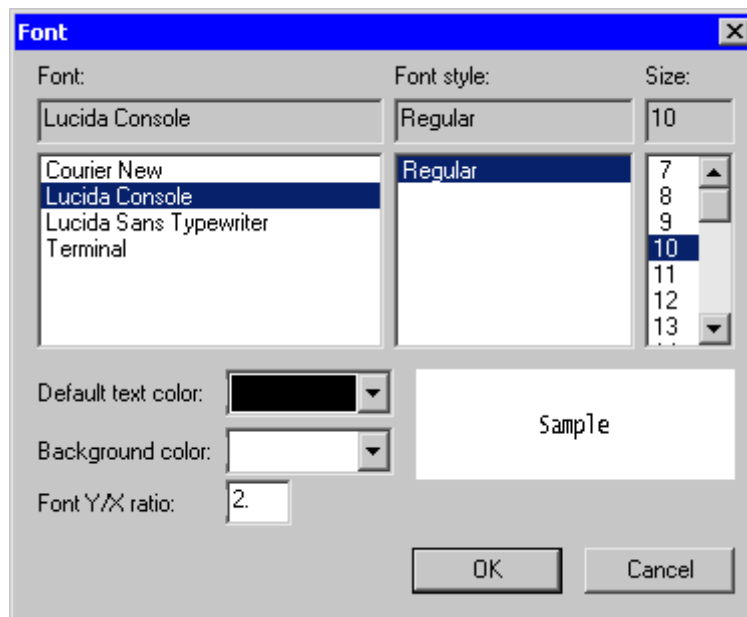
The "Font..." option from the "Options" menu allows you to set the default font size and color and the screen background color.

### ➔ To access the Font window:

- From the **Options** menu, select the **Font...** option.

**Shortcuts:** Toolbar  Keypad **Alt+Shift+T**


The "Font" dialog box will be displayed:




### ➔ Setting the default font:

- Select required Font type, style and size (Default; Courier New, Regular, 14pt). Selections will be displayed in the fields above and an example will be displayed in the "Sample" field.

### ➔ Setting the font color:

- Click on the  button of the "Default text color:" field and select the required color from the drop-down palette of colors. An example will be displayed in the "Sample" field.

### ➔ Setting the screen background color:

- Click on the  button of the "Background color:" field and select the required color from the drop-down palette of colors. An example will be displayed in the "Sample" field.

### ➔ Setting the font Y/X ratio:

This option allows you to set the width ratio of the character against its height.

- In the "Font Y/X ratio:" field, enter a ratio figure (Default 2). An example will be displayed in the "Sample" field.

After all changes have been made to the "Font" window, click on the **OK** button to save your changes, or click on the **Cancel** button to close window and not save changes.



## 2.2.6 Setting the Language

The "Language" window, as shown below, allows you to choose and specify a product specific language translation for use within Flex.Telnet. These language translations are produced using the Flex.Language program.

### ➔ To access the Language window:

- From the **Options** menu, select the **Language...** option.

The "Language" window will appear:



The "Language" window is divided into two sections, "Enable product interface language translation" and "Advanced settings".


### 2.2.6.1 Enable product interface language translation section

Product specific language translations are produced using the "Flex.Language" program and saved on your Windows PC. For details, please refer to the Flex.Language program Help documentation.

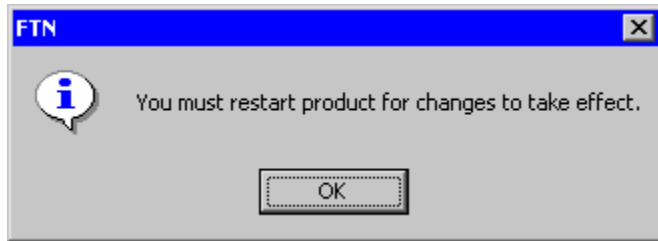
### ➔ To enable a Product specific language:

1. Click on the **Enable product interface language translation** check-box. A tick will appear when enabled and the "Use product specific language:" option listed below will become active. Click again to disable (no tick).

The "Use product specific language:" option allows you to choose a user specified language setting for use within Flex.Telnet.

2. Select required language by clicking on the  button to the right of the "Use product specific language:" field and choosing required language from the drop-down list.
3. Click on the **OK** button.

The following message will appear:



You will need to restart the program before the changes can take effect.

The character set on your PC will change to the selected language. For example, if you have "Spanish" and "English" character sets installed on your PC, you will be able to choose "Spanish" from the drop-down list. Now the character set used will be "Spanish". You are then able to construct a new menu or edit an existing menu in "Spanish". The same applies to all other aspects, e.g., a new text box in a display will be in the "Spanish" character set.

**Note:** The "Flex.Language" program can be used to remotely set or override the "Enable product interface language translation" settings.

### 2.2.6.2 Advanced settings section

Selecting the **Advanced settings** option, tick in check-box, will reveal the **I want language settings to affect current Windows® user only** option.

Selecting the **I want language settings to affect current Windows® user only** option, tick in check-box, allows you to set the Flex.Telnet character set for the user currently logged onto the Windows PC.














For example, if you were to log onto a Windows 2000 PC as "John" and opened Flex.Telnet (logged in as "USERA") and have selected "Spanish" as the chosen language, then the character set in Flex.Telnet will be Spanish.

If you were to log off the Windows 2000 PC and another user logged on as "David", and opens Flex.Start (logged in as "USERA"), the character set will revert to the default character set of "English" and not your preferred language of "Spanish".

After all changes have been made to the "Language" window, click on the **OK** button to save your changes, or click on the **Cancel** button to close window and not save changes.

## 2.2.7 Toolbars

Toolbars are displayed along the top of the Flex.Telnet application window. The toolbars provide quick mouse access to many tools used in Flex.Telnet.

Button	Function
	New Connection
	Disconnect from server
	Clear Screen
	Copy All to Clipboard
	Paste contents of Clipboard
	Print
	Print Preview
	Execute Script
	FTP Explorer
	FTP Editor
	Font Options
	General Options
	About

Font: 14	Select Font Size
----------	------------------

### 2.2.7.1 Opening and closing toolbars

By default, all toolbars are open. You can open and close these toolbars whenever necessary.

#### ➔ To display the toolbars:

- From the **View** menu, select the **Toolbar** option. (Open toolbars display a check mark at the left side).

#### ➔ To hide the toolbars:

- From the **View** menu, select the **Toolbar** option. (Closed toolbars do not display a check mark at the left side).

### 2.2.7.2 Moving Toolbars

You can move a toolbar to make a second toolbar row or you can swap the position of the Standard toolbar and the Font toolbar.

#### ➔ To move a toolbar:

1. Position the pointer somewhere over an area of the toolbar that does not display a button or drop-down list as shown below.




2. Press and hold the mouse button while you drag the toolbar to a suitable location in your window.
3. Release the mouse button to drop the toolbar to its new location. It will remain in this new place until you move it again or close it.

### 2.2.7.3 Selecting a Font size using the Toolbar

You can select/change the font size in the Flex.Telnet display by using the Toolbar.

#### ➔ To change the font size:

- In the "Font:" toolbar, click on the  button and select required Font size from the drop-down list. Use the scroll bar if required Font size is not visible.




The size for the font in the "Font" options window will be updated automatically.

## 2.2.8 Exiting Flex.Telnet

#### ➔ To end your Flex.Telnet session:

From the **File** menu, select the **Exit** option.

**Note:** Alternative methods of quitting the Flex.Telnet program are:

- Right-click on the application's Control menu button  or on the  icon in the Taskbar and select **Exit** from the pop-up menu.
- Double-click the application's Control menu button.
- Click the  button on the right-hand side of the title bar.
- With the "Flex.Telnet" application window active, key **Alt+Shift+X**.

## 2.3 Host connection and disconnection

### 2.3.1 Connecting to the remote Host

The "New Connection..." option from the "File" menu allows you to connect to and gain access to the operating environment of a remote RealFlex QNX server (Host).

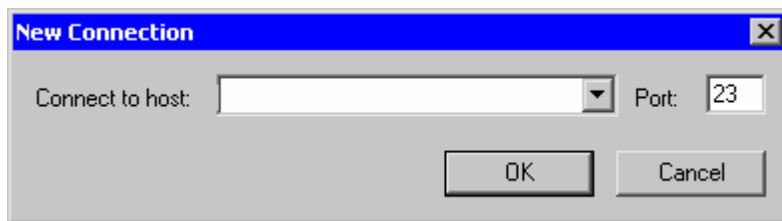
If you want to record the current Flex.Telnet session to a file on your hard drive, activate the "Log Session..." option from the "Tools" menu before connecting to the Host. For details, please refer to Section 2.3.5.

#### ➔ To connect to a Host:


1. From the **File** menu, select the **New Connection...** option.

**Shortcuts:** Toolbar  Keypad **Alt+Shift+N**

The "New Connection" dialog box will appear:



2. In the "Connect to host:" field, enter the Host name or IP address of the RealFlex server you want to connect to.

**Note:** If you have previously connected to a RealFlex server, click on the  button of the "Connect to host:" field and a drop-down list of the Host names or addresses you've recently connected to while using the Flex.Telnet program will be displayed.

From the drop-down list, click on the name or address that corresponds with the Host you want to connect to.

If the Host from the drop-down list has been removed or renamed since the last usage, the program displays a "Connection Error" message.

3. In the "Port:" field, enter the Port number of the RealFlex server you want to connect to.

**Note:** Port 23 is the standard port for Flex.Telnet connection.

4. Click on the **OK** button.

Flex.Telnet will attempt to connect you to the required Host. When the connection is successful the following "login" prompt will appear:

```
Welcome to QNX 4.25
Copyright (c) QNX Software Systems Ltd. 1982,1998
login:
```

Any connection problems or errors are reported. When connected to the RealFlex server, the "Disconnect" option in the "File" menu will be enabled and the Host name or IP address and Port number will be displayed in the Flex.Telnet Title bar.



### 2.3.1.1 Logging on

1. At the flashing cursor of the "login" prompt, enter **root** as the login name and press **Enter**.

Flex.Telnet will then request a Password.

2. At the flashing cursor of the "Password" prompt, enter your Password and press **Enter**.

Passwords are case sensitive and will not be echoed to the screen while being entered.

After the Password has been accepted, the following information will be displayed:

```
Last login: Fri Mar 14 16:55:07 2003 on //1/dev/ttyp0
Tue Mar 18 10:13:33 2003
#
```

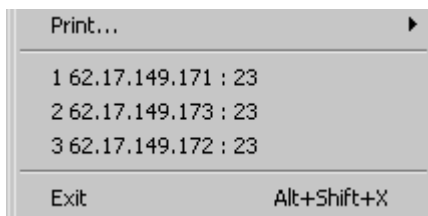
The first line displays the date and time the system was last logged onto and what you were connected to. In the example above, this is Node 1 using a session called a "ttyp0".

In the second line, the current logon date and time is displayed.

### 2.3.2 Recent Hosts

When you initially start to use the Flex.Telnet program, a "No Sessions..." option will be listed in the "File" menu between the "Print..." and "Exit" options.

Once you start using Flex.Telnet and connect to RealFlex servers, the "No Sessions..." option will be replaced by a list of the "Most Recently Used" Host names or addresses you've recently connected to while using the Flex.Telnet program as shown below.



#### ➔ To connect to a Host using the MRU list:

- From the **File** menu, click on the name or address that corresponds with the Host you want to connect to.

If the Host from the list has been removed or renamed since the last usage, the program displays a "Connection Error" message.

Flex.Telnet will attempt to connect you to the required Host.

**Note:** You can set the number of entries in the Most Recently Used Host names or addresses list via the "General Options" window. For details, please refer to Section 2.2.4.3.

Please refer to Section 2.3.1.1 for details on how to login.



### 2.3.3 Confirming connection to FTP

The "Send AYT" option from the "Control" menu checks to see if the "IP address" and "Port" you are using is able to connect to FTP. "AYT" stands for "Are You There".

#### ➔ To send AYT:

- From the **Control** menu, select the **Send AYT** option.

**Shortcut:** Keypad **Alt+Shift+A**

If the return response is "YES", then it supports FTP. If there is no response, then it does not support FTP.

### 2.3.4 Disconnecting from the remote Host

#### ➔ To disconnect from the RealFlex server:

- From the **File** menu, select the **Disconnect** option.

**Shortcuts:** Toolbar  Keypad **Alt+Shift+D**

When disconnected from the RealFlex server, the "Disconnect" option in the "File" menu will be disabled and "<disconnected>" will be displayed in the Flex.Telnet Title bar.

### 2.3.5 Logging the Flex.Telnet session

The "Log Session..." option from the "Tools" menu allows you to record the current Flex.Telnet session to a file on your hard drive.

These files can be opened in Microsoft Word allowing you to view or print off the log details.

#### ➔ To log the session:

1. From the **Tools** menu, select the **Log Session...** option.

**Shortcut:** Keypad **Alt+Shift+L**

The "Log Session" dialog box will appear.

2. Specify the location and the name for the Log file to be saved. The "Save as type" will always be "Telnet Log Files (\*.ftn)". For details on how to use this dialog box, please refer to Section 4.2.
3. Click on the **Save** button.

When the "Log Session" option is active, a check mark will be displayed at the left side of the "Log Session..." option in the "Tools" menu.

All information displayed in the Working Area of the Flex.Telnet application window will now be recorded to file.

### 2.3.6 Executing a Script file

The "Execute Script..." option from the "Tools" menu allows you to run a "Script" or "QNX command instruction" file that has been saved on your hard drive.

#### ➔ To execute a Script:

1. Create your Script in Notepad. (This script should be arranged so that it connects to the Realflex server, logs on and changes the working directory to /tmp). Save your Script with an ".fts" extension.
2. Open Flex.Telnet.
3. From the **Tools** menu, select the **Execute Script...** option.

**Shortcuts:** Toolbar  Keypad **Alt+Shift+S**

The "Execute Script" dialog box will appear.

4. Locate the required Script file. The "Files of type" will always be "Telnet Script Files (\*.fts)". For details on how to use this dialog box, please refer to Section 4.1.
5. Click on the **Open** button.

The selected script file will run making Flex.Telnet connect and log into the RealFlex server and change the "pwd" (present working directory) to "/tmp".

### 2.3.7 Resetting the Terminal

Sometimes files you are editing in Flex.Telnet can get out of synchronization with the "actual" file on the remote system due to communication errors.

The "Reset Terminal" option from the "Control" menu resets communication settings and in the process updates and differences that might have occurred between the local and remote version of the file.

#### ➔ To reset the terminal:

- From the **Control** menu, select the **Reset Terminal** option.

### 2.3.8 Clearing the screen

The "Clear Screen" option from the "Control" menu allows you to clear the contents of the Flex.Telnet screen.

#### ➔ To clear the screen:

- From the **Control** menu, select the **Clear Screen** option.

**Shortcuts:** Toolbar  Keypad **Alt+Shift+C**

The contents of the Flex.Telnet screen will be cleared.



## 2.3.9 Flex.Telnet Usage options

The Flex.Telnet Usage Options as listed in the "About Flex.Telnet" window, are used to allow you to log into a remote file system and execute selected commands automatically. For example, if a user frequently logs into a system and carries out the same command each time, he/she can automate this process by creating a Desktop Shortcut using these options.

### ➔ To create a shortcut:

**Example 1:** shows how you can create a shortcut to automatically check a file in the "reports" directory.

1. On your desktop, create a shortcut to Flex.Telnet. Please refer to the Windows Help topics for details on how to create a shortcut.
2. Right-click on the shortcut and select **Properties** from the pop-up menu. The "Flex.Telnet Properties" window, "Shortcut" tab will appear.
3. Within the "target" field the following command will exist "**C:\Program Files\DATAC\Flex.View\FTN.exe**".

Add to this command line to automate the procedure:

```
"C:\Program Files\DATAC\Flex.View\FTN.exe" -h"192.168.0.51" -p"23" -l"root" -s"tuscan" -e"cd reports" -e"more TodayReport"
```

where:

- h = Host name or IP address
- p = port number
- l = login name
- s = password
- e execute command.

Now when you click on this shortcut to Flex.Telnet, it will automatically connect you to the remote Host, log in and bring up today's report from the reports folder.

**Example 2:** shows how you can automatically run a "script file" (Some commands saved in a text file).

1. On your desktop, create a shortcut to Flex.Telnet. Please refer to the Windows Help topics for details on how to create a shortcut.
2. Right-click on the shortcut and select **Properties** from the pop-up menu. The "Flex.Telnet Properties" window, "Shortcut" tab will appear.
3. Within the "target" field the following command will exist "**C:\Program Files\DATAC\Flex.View\FTN.exe**".

Add to this command line to automate the procedure:

```
"C:\Program Files\DATAC\Flex.View\FTN.exe" -i"first.txt".
```

where:

- i = script file

Now when you click on this shortcut to Flex.Telnet, it will automatically run the script file "first text".



### 2.3.9.1 List of Usage options

#### Option

-h	or	-host	=	<host name or IP address>
-p	or	-port	=	<port number>
-l	or	-login	=	<login name>
-s	or	-password	=	<password>
-e	or	-exec	=	"command"
-i	or	-script	=	<file>
-n	or	-nouserinput	=	




## 2.4 Print functions

### 2.4.1 Printing

The "Print..." option from the "File - Print" sub-menu, allows you to print the contents of the Flex.Telnet screen.

#### ➔ To print the contents of the screen:

- From the **File** menu, select the **Print** option and choose **Print...** from the resulting sub-menu.

**Shortcut:** Toolbar 

The "Print" dialog box will appear where you may specify the destination printer, the range of pages to be printed, the number of copies, and other printer setup options.

### 2.4.2 Print Preview

The "Print Preview" option from the "File - Print" sub-menu, allows you to display the contents of the screen as it would appear when printed.


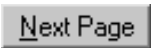

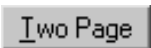


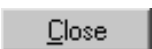
#### ➔ To preview the screen contents before printing:

- From the **File** menu, select the **Print** option and choose **Print Preview** from the resulting sub-menu.

**Shortcuts:** Toolbar  Keypad **Alt+Shift+P**

The main window will be replaced with a print preview window in which a page or pages will be displayed in their printed format. The buttons on the print preview toolbar, shown below, offers you options to move back and forth through the pages; zoom in and out of pages; initiate a print job; close the print preview window.

#### Print Preview toolbar

	Brings up the Print dialog box, to start a print job.
	Preview the next printed page.
	Preview the previous printed page.
	Preview two printed pages.
	Take a closer look at the printed page.
	Take a larger look at the printed page.
	Exits Print Preview and returns you to the previous Flex.Telnet window.

### 2.4.3 Printer setup

The "Print Setup" option from the "File - Print" sub-menu, allows you to change your printing preferences. This command presents a Print Setup dialog box, where you may specify the destination printer, the page size and orientation and other printer setup options.



## 2.5 Downloading and Uploading files

### 2.5.1 Editing FTP files

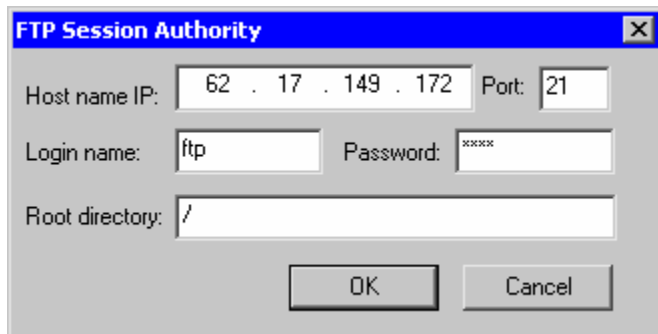
The "FTP Editor..." option from the "Tools" menu allows you to retrieve a file from the remote Host and place the contents of the file into your chosen External Editor program ready for viewing and editing.

➔ **To edit a remote file:**

1. From the **Tools** menu, select the **FTP Editor...** option.

**Shortcuts:** Toolbar  Keypad **Alt+Shift+E**

The "FTP Session Authority" dialog box will appear:

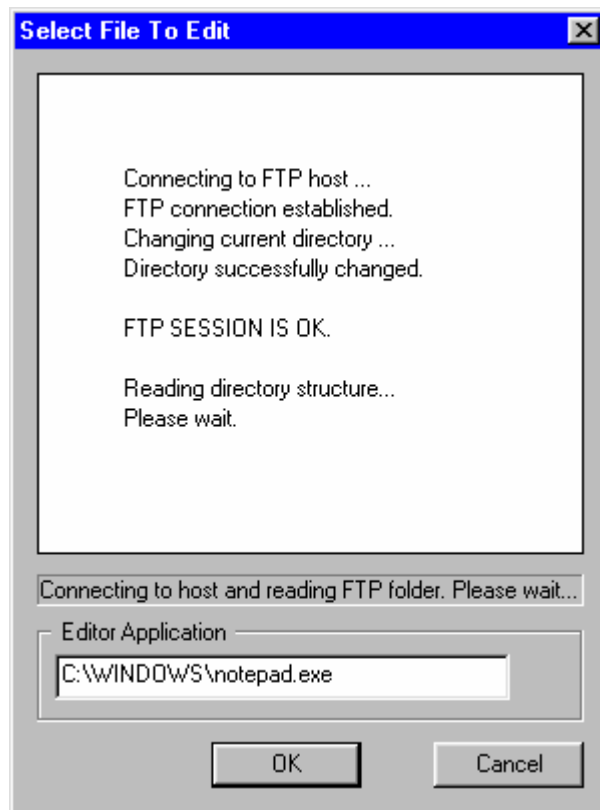


2. Complete fields as follows:

Field	Enter
Host name IP:	Enter the IP address of the RealFlex server you want to connect to.
Port:	The port will always be "21".
Login name:	The Login name may depend on the system you are connecting to. (Default name "ftp").
Password:	Enter your Password. <b>Note:</b> Passwords are case sensitive and will not be echoed to the screen while being entered.
Root directory:	Leave the forward slash "/" in this field. Once connected to the Host file system, you will be able to search for the required file.

3. When you have completed all fields, click on the **OK** button.

The "Select File To Edit" dialog box will appear:

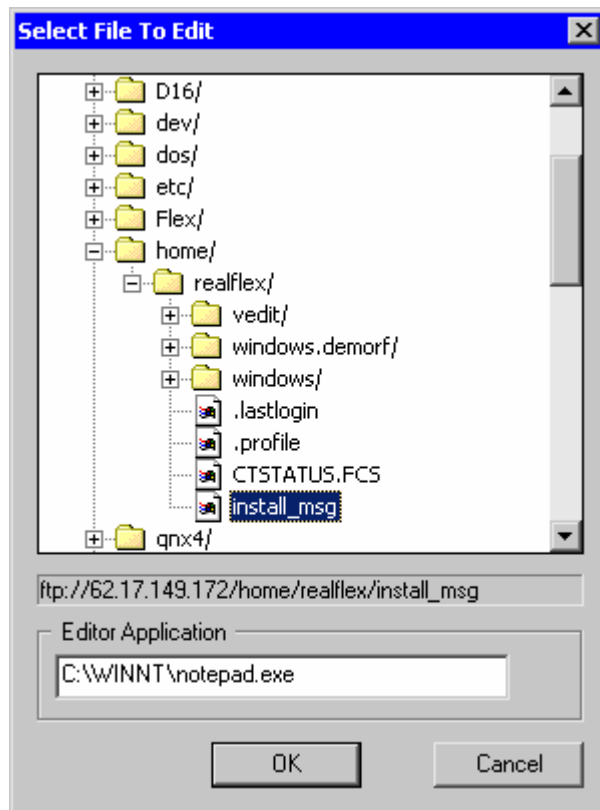


Flex.Telnet will attempt to connect you to the required Host. Progress will be reported as shown above.

When the connection is successful, Flex.Telnet will present you with a hierarchical structure of folders and files as shown below.

This structure is similar to Windows Explorer and you can use the same methods to search for and select folders and files.

**Note:** If a hierarchical structure of folders and files on the remote Host does not appear and you are using Microsoft® Internet Explorer, ensure that your Internet Explorer is set up correctly. Open your Internet Explorer and from the **Tools** menu, select the **Internet Options...** option. Select the **Advanced** tab and under the **Browsing** section, ensure the **Enable folder view of FTP sites** option is ticked.



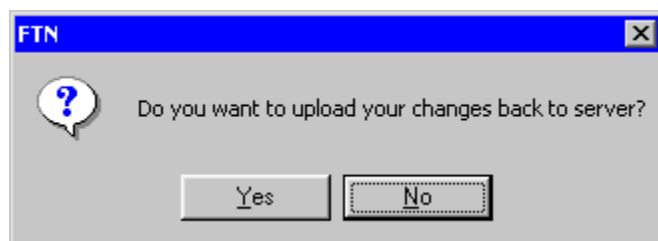
In the "Editor Application" section, the path to your Microsoft® Notepad application is displayed. If required, you can choose a different application to edit your files, for example, WordPad, Word etc. Type in the full path and file name to your chosen application.

4. In the "Select File To Edit" dialog box, search for and select the file you wish to edit, then click on the **OK** button.

Your chosen External Editor program will open and the contents of the selected file will be displayed.

5. Edit the file as required, then **Save** the file and close down the External Editor program.

The following message will be displayed:



6. Click on the **Yes** button to Upload the changes to the Host, or click on the **No** button to abort the operation.

## 2.5.2 Exploring FTP Folders and Files

The "FTP Explorer..." option from the "Tools" menu allows you to copy, rename, and search for files and folders on the remote Host or on your PC. For example, you can open a folder that contains a file you want to copy, and then drag it to another folder or even another drive.

➔ **To access the FTP explorer:**

1. From the **Tools** menu, select the **FTP Explorer...** option.

**Shortcuts:** Toolbar  Keypad **Alt+Shift+F**

The "FTP Session Authority" dialog box will appear:

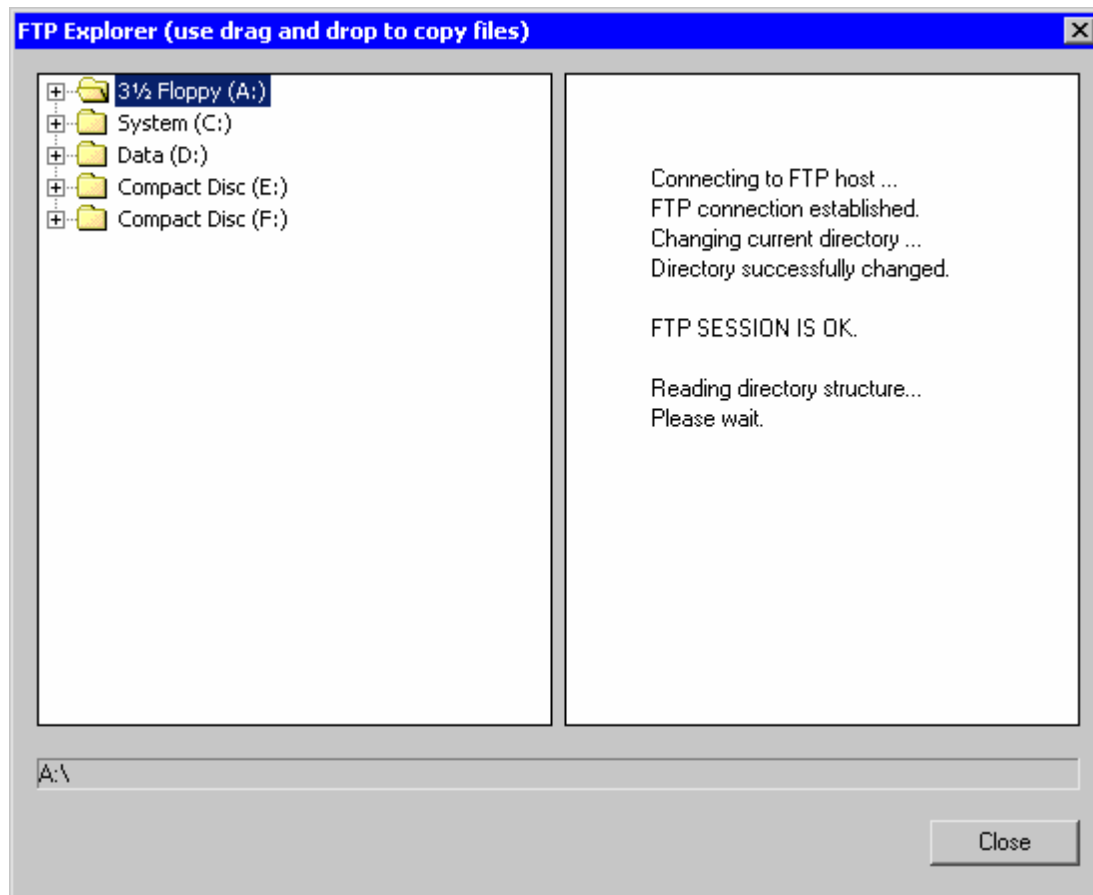


2. Complete fields as follows:

Field	Enter
Host name IP:	Enter the IP address of the RealFlex server you want to connect to.
Port:	The port will always be "21".
Login name:	The Login name may depend on the system you are connecting to. (Default name "ftp").
Password:	Enter your Password. <b>Note:</b> Passwords are case sensitive and will not be echoed to the screen while being entered.
Root directory:	Leave the forward slash "/" in this field. Once connected to the Host file system, you will be able to search for folders and files.

3. When you have completed all fields, click on the **OK** button.

The "FTP Explorer" dialog box will appear:

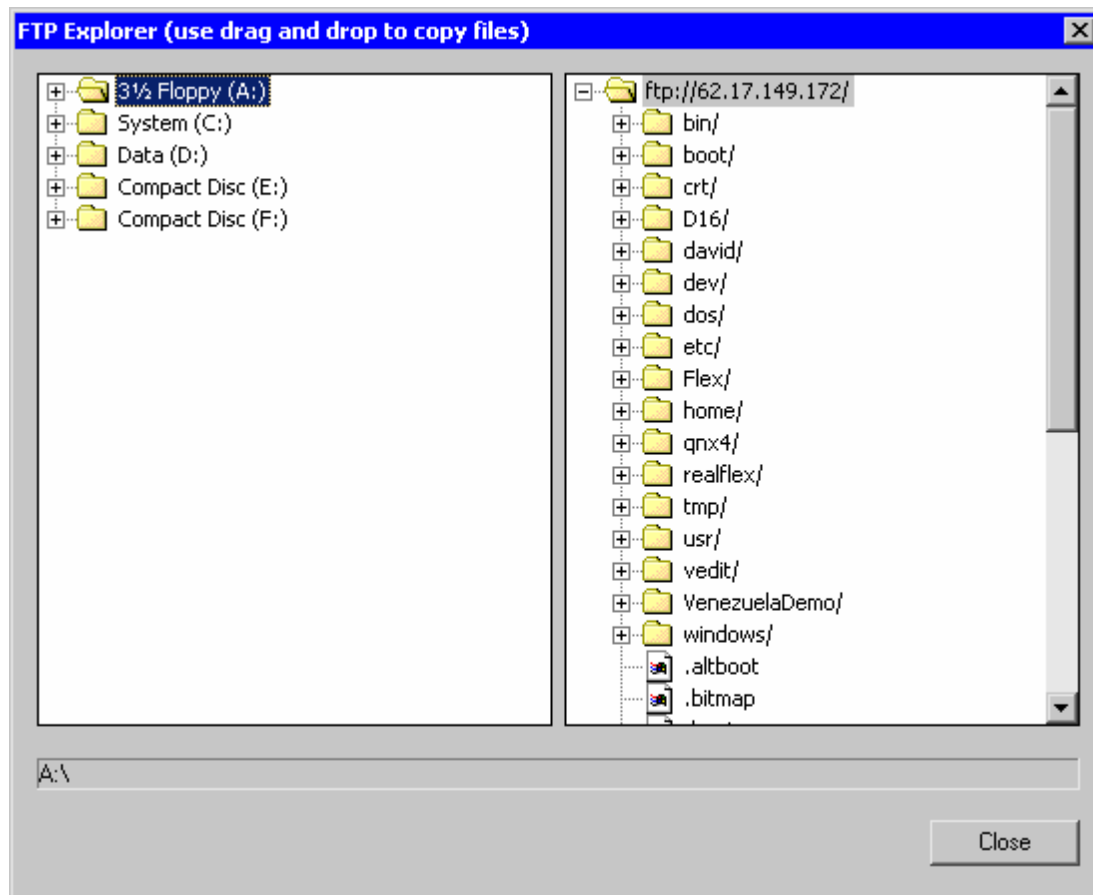


Initially, the left-hand section displays a hierarchical structure of folders and files on your PC. Flex.Telnet will attempt to connect you to the required Host. Progress will be reported in the right-hand section as shown above.

When the connection is successful, Flex.Telnet will present you with a hierarchical structure of folders and files on the remote Host as shown in the right-hand section of the "FTP Explorer" dialog box shown below.

These structures are similar to Windows Explorer and you can use the same methods to search for and select folders and files.

**Note:** If a hierarchical structure of folders and files on the remote Host does not appear and you are using Microsoft® Internet Explorer, ensure that your Internet Explorer is set up correctly. Open your Internet Explorer and from the **Tools** menu, select the **Internet Options...** option. Select the **Advanced** tab and under the **Browsing** section, ensure the **Enable folder view of FTP sites** option is ticked.



From the "FTP Explorer" dialog box, you can:

**Browse for files or folders:**

1. Select the folder you want to browse.
2. Click right-mouse then select **Browse** from the pop-up menu.

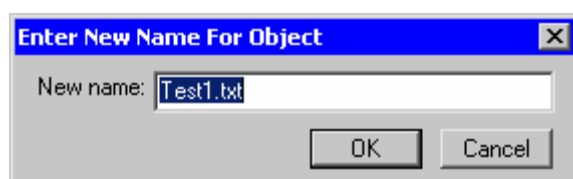
**Open a file:**

1. Select the file you want to open.
2. Click right-mouse then select **Open** from the pop-up menu.

**Rename folders or files:**

1. Select the folder or file you want to rename.
2. With the pointer positioned over the selected folder or file, click right-mouse then select **Rename** from the pop-up menu.

The "Enter New Name For Object" dialog box will appear:

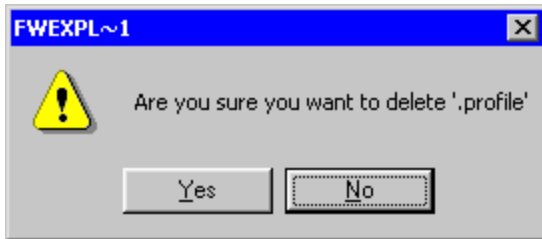


3. Edit or type in the new name for the folder or file, and then click on the **OK** button.

**Delete files or folders:**

1. Select the folder or file you want to delete.
2. With the pointer positioned over the selected folder or file, click right-mouse then select **Delete** from the pop-up menu.

The following prompt will appear asking for your confirmation:

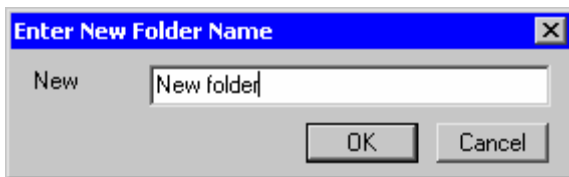


3. Click on the **Yes** button to delete the folder or file, or click on the **No** button to abort the operation.

**Add a new folder:**

1. Click on the drive or folder in which you want to create a new folder.
2. Click right-mouse then select **New Folder** or **New in Selected** from the pop-up menu.

The "Enter New Folder Name" dialog box will appear:



3. Type in the name for the folder, and then click on the **OK** button.

**Copy files:**

1. Open the folder where you want to copy the item to.
2. Select the file you want to copy, and then drag it to the required folder.

## 2.6 Editing remote files

### 2.6.1 Copying screen contents to the Clipboard

The "Copy All" option from the "Edit" menu allows you to copy the content of the entire screen onto the Clipboard. After the contents have been copied to the Clipboard, you may then Paste it into your chosen External Editor application.

#### ➔ To copy the entire screen:

- From the **Edit** menu, select the **Copy All** option.

**Shortcuts:** Toolbar  Keypad **Ctrl+Alt+Ins**

The contents of the Flex.Telnet screen will be copied to the Clipboard.

### 2.6.2 Pasting contents of Clipboard

The "Paste" option from the "Edit" menu allows you to paste the contents of the Clipboard into the screen at the cursor position. This could be used to run a "Script file" or "QNX command instructions" created in another application and copied to the Clipboard.

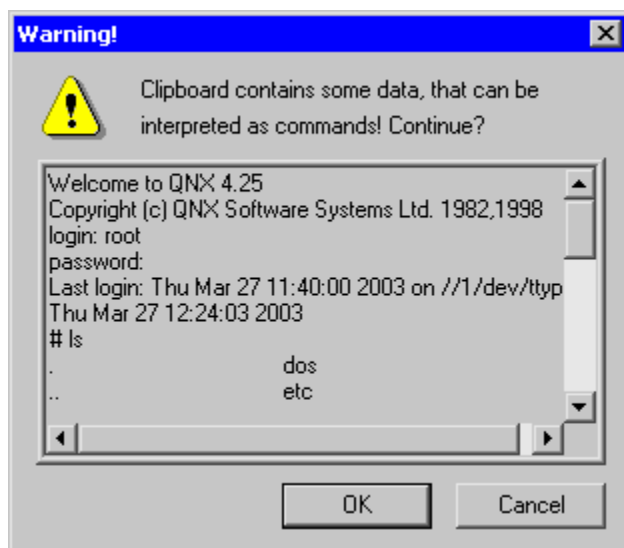
#### ➔ To paste the contents of the Clipboard:

- From the **Edit** menu, select the **Paste** option.

**Shortcuts:** Toolbar  Keypad **Shift+Alt+Ins**

The contents of the Clipboard will be pasted into the screen at the cursor position.

**Note:** If the contents of the Clipboard contain data that may be interpreted as commands, Flex.Telnet will display a "Warning" dialog box similar to the one shown below.



If you are satisfied with the contents of the Clipboard, click on the **OK** button to proceed, or click on the **Cancel** button to abort the operation.

## 2.7 Help information

### 2.7.1 Help

The "Help" option from the "Help" menu links you to the on-line Help and provides topics and tips to help you accomplish your tasks.

#### ➔ To access the on-line Help:

- From the **Help** menu, select the **Help** option.

**Shortcut:** Keypad **F1**

### 2.7.2 About Flex.Telnet

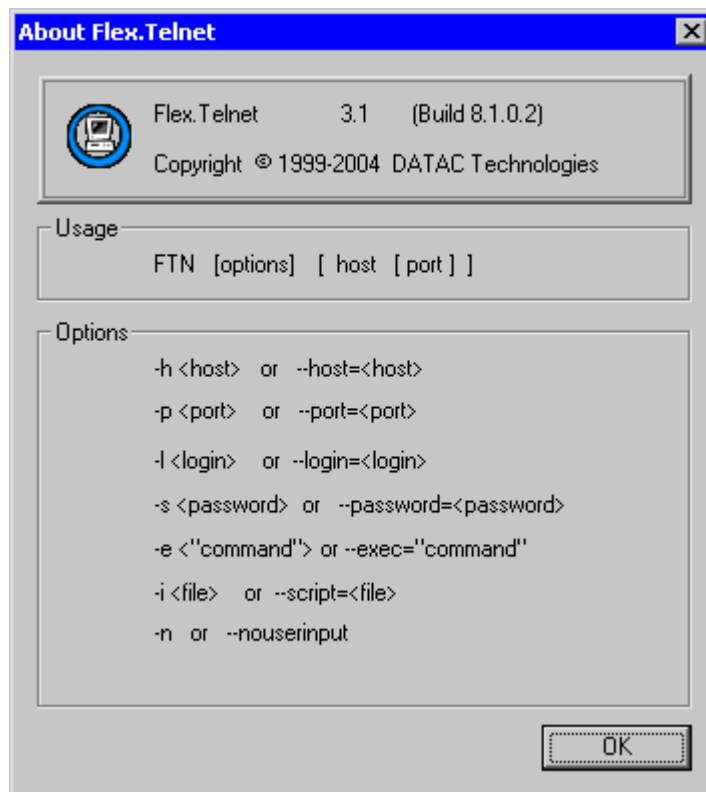
Selecting "About Flex.Telnet" from the "Help" menu will display Flex.Telnet program information similar to the display below.

Use this command to display information about the Flex.Telnet software you are using, such as software version number and build number. This information can be given to the support engineer in the event of a problem with Flex.Telnet.

- From the **Help** menu, select the **About Flex.Telnet** option.

**Shortcut:** Toolbar 

The "About Flex.Telnet" window will appear:



The "About Flex.Telnet" window also displays a list of Flex.Telnet Usage options. For information on how these options are used, please refer to Section 2.3.9.





## 3 Menus

---

---

### 3.1 File menu

The "File" menu offers the following commands:

**New Connection...** - Connects you to the RealFlex server. For details, please refer to Section 2.3.1.

**Disconnect** - Disconnects you from the RealFlex server. For details, please refer to Section 2.3.4.

**Print...** - Leads you to the Print Sub-menu:

**Print...** - Allows you to print the contents of the Flex.Telnet screen. For details, please refer to Section 2.4.1.

**Print Preview** - Allows you to display the contents of the screen as it would appear when printed. For details, please refer to Section 2.4.2.

**Print Setup...** - Allows you to change your printing preferences. For details, please refer to Section 2.4.3.

**No Sessions...** - The "No Sessions..." option will be replaced by a list of the last four Host names or addresses you've recently connected to while using the Flex.Telnet program. For details, please refer to Section 2.3.2.

**Exit** - Exits the Flex.Telnet program. For details, please refer to Section 2.2.8.

### 3.2 Edit menu

The "Edit" menu offers the following commands:

**Copy All** - Allows you to copy the content of the entire screen onto the Clipboard. For details, please refer to Section 2.6.1.

**Paste** - Allows you to insert a copy of the Clipboard contents into the Flex.Telnet screen. For details, please refer to Section 2.6.2.

### 3.3 View menu

The "View" menu offers the following commands:

**Toolbar** - Show or Hide the Toolbar. For details, please refer to Section 2.2.7.

**Status Bar** - Show or Hide the Status bar. For details, please refer to Section 2.2.2.



### 3.4 Control menu

The "Control" menu offers the following commands:

**Clear Screen** - Allows you to clear the contents of the Flex.Telnet screen. For details, please refer to Section 2.3.8.

**Send Break** - Sends a "logical" break to the FTP session and disconnects you from the RealFlex server. **Note:** This option is currently not supported by QNX.

**Send AYT** - Checks to see if the "IP address" and "Port" you are using is able to connect to FTP. For details, please refer to Section 2.3.3.

**Reset Terminal** - Resets communication settings and updates and differences that might have occurred between the local and remote version of the file. For details, please refer to Section 2.3.7.

### 3.5 Tools menu

The "Tools" menu offers the following commands:

**Log Session...** - Allows you to record the current Flex.Telnet session to a file on your hard drive. For details, please refer to Section 2.3.5.

**Execute Script...** - Allows you to run a "Script file" or "QNX command instruction file" stored on your hard drive. For details, please refer to Section 2.3.6.

**FTP Explorer...** - Allows you to copy, rename, and search for files and folders on the remote Host or on your PC. For details, please refer to Section 2.5.2.

**FTP Editor...** - Allows you to retrieve a file from the remote Host and place the contents of the file into your chosen External Editor program ready for viewing and editing. For details, please refer to Section 2.5.1.

### 3.6 Options menu

The "Options" menu offers the following commands:

**General...** - Allows you to set the general properties of the Flex.Telnet application window. For details, please refer to Section 2.2.4.

**Font...** - Allows you to set the default font size and color and the screen background color. For details, please refer to Section 2.2.5.

**Language...** - Allows you to choose and specify a product specific language translation for use within Flex.Telnet. For details, please refer to Section 2.2.6.

### 3.7 Help menu

The "Help" menu offers the following commands:

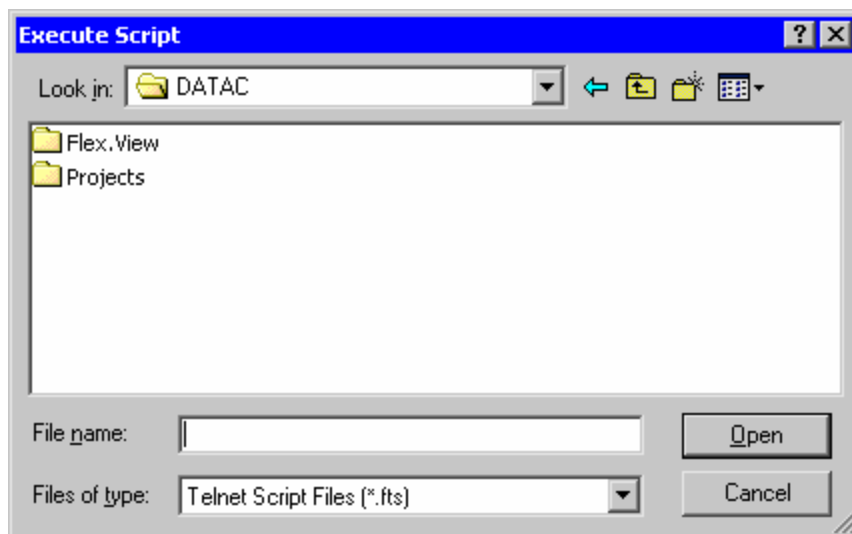
**Help** - Links you to the on-line Help. For details, please refer to Section 2.7.1.

**About Flex.Telnet** - Displays Flex.Telnet program information and list of Flex.Telnet "Usage options". For details, please refer to Section 2.7.2.




## 4 Dialog boxes


### 4.1 Execute Script dialog box




The following options allow you to specify the name and location of the file you're about to open:

**Look in:** Displays the current folder and its list of available folders and files. Double-click on the folder you want to open. To see where the current folder is located in the hierarchy of folders, click on the  button. The resulting drop-down box displays folders above the selected location.

**Go To Last Folder Visited:**  Moves to the last folder you visited.

**Up One Level:**  Moves the "Look in" folder up one level in the directory hierarchy.

**Create New Folder:**  Creates a new folder in the current directory hierarchy.

**View Menu:**  Allows you to change the appearance of items in a folder. Click the View menu button, and then click on **Large Icons**, **Small Icons**, **List**, **Details**, or **Thumbnails** as required from the drop-down list.

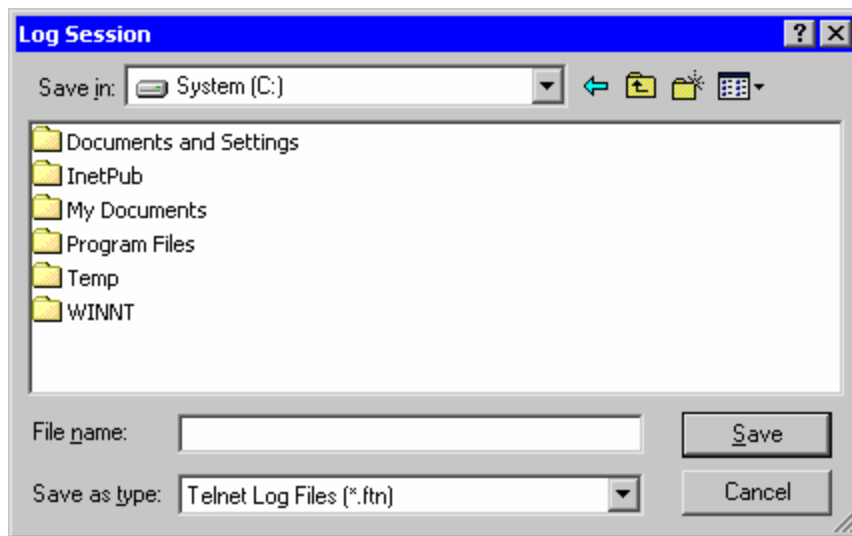
**File name:** Displays files of the type specified in the "Files of type" field. To open a file, choose from the list, or type a path and filename in the box.

**Files of type:** Displays the file types you can open, identified by their filename extension. To change the type, choose from the drop-down list. The "Files of type" will normally be "Telnet Script files (\*.fts)".


**Open button:** Opens the selected file.




## 4.2 Log Session dialog box




The following options allow you to specify the name and location of the file you're about to save:

**Save in:** Displays the current folder and its list of available folders and files. Double-click on the folder you want to open. To see where the current folder is located in the hierarchy of folders, click on the  button. The resulting drop-down box displays folders above the selected location.

**Go To Last Folder Visited:**  Moves to the last folder you visited.

**Up One Level:**  Moves the "Save in" folder up one level in the directory hierarchy.

**Create New Folder:**  Creates a new folder in the current directory hierarchy.

**View Menu:**  Allows you to change the appearance of items in a folder. Click the View menu button, and then click on **Large Icons**, **Small Icons**, **List**, **Details**, or **Thumbnails** as required from the drop-down list.

**File name:** Displays files of the type specified in the "Save as type" box. To save a file, choose from the list, or type a path and filename in the box.

**Save as type:** Displays the file types you can save as, identified by their filename extension. To change the type, choose from the drop-down list. The "Save as type" will always be "Telnet Log Files (\*.ftn)".

**Save button:** Saves the selected file.

# Index

.ftn Log file .....	22
.fts files.....	23
<b>A</b>	
About Flex.Telnet .....	35
Usage options .....	24
Adding Folders .....	30
Alt+Shift+A - Send AYT shortcut .....	22
Alt+Shift+C - Clear Screen shortcut .....	23
Alt+Shift+D - Disconnect shortcut .....	22
Alt+Shift+E - FTP Editor shortcut .....	27
Alt+Shift+F - FTP Explorer shortcut .....	30
Alt+Shift+L - Log Session shortcut .....	22
Alt+Shift+N - New Connection shortcut .....	20
Alt+Shift+O - General Options shortcut .....	13
Alt+Shift+P - Print Preview shortcut .....	26
Alt+Shift+S - Execute Script shortcut .....	23
Alt+Shift+T - Font options shortcut .....	15
Alt+Shift+X - Exit Flex.Telnet shortcut .....	19
Application window .....	10
Are You There .....	22
AYT .....	22
<b>B</b>	
Background color of screen.....	15
Browse - For files on the remote Host.....	27
For folders and files .....	30
<b>C</b>	
Cancel button .....	11
CAP .....	11
Caps Lock key - Indicates .....	11
Change - Font size using the Toolbar .....	19
Clear Screen (Control menu).....	23
Clipboard - Copying the contents of the screen .....	34
Pasting contents to the screen .....	34
Close - Flex.Telnet application program.....	19
Button.....	10
Color - Font.....	15
Screen background.....	15
Columns - Number in screen.....	13
Connecting - To the RealFlex server.....	20
MRU list.....	21
To FTP .....	22
Using Recent Hosts .....	21
Control menu - Commands .....	38
Clear Screen .....	23
Reset Terminal.....	23
Send AYT.....	22
Copy - Contents of screen to the Clipboard .....	34
Copy All (Edit menu).....	34
Create New Folder .....	39, 40
Creating - Desktop Shortcut .....	24
Ctrl+Alt+Ins - Copy All shortcut .....	34



**D**

Delete - Folders and files.....	30
Desktop Shortcut - Creating.....	24
Dialog boxes - Enter New Folder Name.....	30
Enter New Name For Object.....	30
Execute Script.....	39
FTP Explorer.....	30
FTP Session Authority.....	27
General Options.....	13
Log Session.....	40
New Connection.....	20
Select File To Edit.....	27
Disconnect from the RealFlex server.....	22
Display - Status bar.....	11
Toolbars.....	18
Down-arrow button.....	11

**E**

Edit - A file from the remote Host.....	27
Edit menu - Commands.....	37
Copy All.....	34
Paste.....	34
Enter New Folder Name dialog box.....	30
Enter New Name For Object dialog box.....	30
Entering data.....	11
Execute Script (Tools menu).....	23
Execute Script dialog box.....	39
Exit the Flex.Telnet application program.....	19
External Editor.....	27

**F**

F1 - On-line Help shortcut.....	35
File menu - Commands.....	37
Disconnect.....	22
Exit.....	19
Most Recently Used list.....	21
New Connection.....	20
No Sessions.....	21
Print - Print.....	26
Print - Print Preview.....	26
Print - Print Setup.....	26
File name.....	39, 40
Files of type.....	39, 40
Flex.Telnet - Application window.....	10
Exiting.....	19
Overview.....	7
Session Log file.....	22
Starting the program.....	9
Title bar.....	10
Usage options.....	24
Folder - Selecting and viewing.....	30
Font - Changing size via the Toolbar.....	19
Font (Options menu).....	15
Background color.....	15
Default color.....	15
Type, style and size.....	15
Y/X ratio.....	15
Font window.....	15
FTN.exe file.....	9



FTP - Support .....	22
FTP Editor (Tools menu) .....	27
FTP Explorer (Tools menu) .....	30
FTP Session Authority dialog box .....	27, 30

**G**

General Options window .....	13
General... (Options menu) .....	13
Go To Last Folder Visited .....	39, 40

**H**

Help menu - Commands .....	38
About Flex.Telnet .....	35
Help .....	35
Help topics .....	35
Hide - Status Bar .....	11
Toolbars .....	18
Host - Connecting to .....	20
Connect to recent Hosts .....	21

**I**

IP address - Connecting to Host .....	20
---------------------------------------	----

**L**

Language setting .....	16
Language window (Options menu) .....	16
Log - Flex.Telnet Session .....	22
Log Session (Tools menu) .....	22
Log Session dialog box .....	40
Logging onto the RealFlex server .....	20
Look in .....	39, 40

**M**

Maximize - Button .....	10
Minimize - Button .....	10, 11
Flex.Telnet window .....	11
Most Recently Used list .....	21
Define number of entries .....	13
Move - Flex.Telnet windows and dialog boxes .....	11
Toolbars .....	19
MRU list .....	21
Define number of entries .....	13

**N**

New - Folder .....	30
New Connection (File menu) .....	20
No Sessions (File menu) .....	21
Notepad - Editing Remote File .....	27
NUM LOCK key - Indicates .....	11
Number of history lines .....	13

**O**

OK button .....	11
Open - Files .....	30
Options menu - Commands .....	38
Font .....	15
General .....	13
Language .....	16
Overview .....	7



**P**

Password - Logging onto the RealFlex server .....	20
Paste (Edit menu) .....	34
Port - Connecting to Host .....	20
Print .....	26
Via Print Preview window .....	26
Print Preview .....	26
Print Setup .....	26
PWD (Present working directory) .....	23

**Q**

Quitting Flex.Telnet .....	19
----------------------------	----

**R**

Ratio - Font Y/X ration .....	15
RealFlex - Connecting to .....	20
Logging on .....	20
Recent Hosts .....	20, 21
Rename - Folders and files .....	30
Reset Terminal (Control menu) .....	23
Restore - Button .....	11
Flex.Telnet window .....	11
Rows - Number in screen .....	13

**S**

Scroll bars .....	11
Screen - Background color .....	15
Clear contents .....	23
Size settings .....	13
Script files .....	23
Select File To Edit dialog box .....	27
Select/change - Font size via the Toolbar .....	19
Send AYT (Control menu) .....	22
Setting - Screen background color .....	15
Fixed terminal window size .....	13
Font color .....	15
Font type, style and size .....	15
Font Y/X ratio .....	15
Language .....	16
Setup - Printer .....	26
Shift+Alt+Ins - Paste shortcut .....	34
Show - Status Bar .....	11
Toolbars .....	18
Size - Flex.Telnet screen .....	13
Starting the Flex.Telnet program .....	9
Status Bar - Show or hide .....	11
Synchronization .....	23

**T**

Telnet Script files .....	23
Terminal type .....	13
Terminal-specific options .....	13
Title bar .....	10
Tmp .....	23
Toolbars - Displaying and Hiding .....	18
Font size .....	19
Moving .....	19
Print Preview .....	26
Toolbars (View menu) .....	18



Tools menu - Commands .....	38
Execute Script.....	23
FTP Editor .....	27
FTP Explorer .....	30
Log Session .....	22
Ttyp0.....	20
<b>U</b>	
Up One Level.....	39, 40
Upload - Files to the remote Host.....	27
Usage options.....	24, 35
<b>V</b>	
View Menu .....	39, 40
View menu - Commands .....	37
Status bar.....	11
Toolbars .....	18
<b>W</b>	
Window - Minimizing and Restoring .....	11
Moving.....	11
Restoring.....	11
WordPad.....	27
<b>Y</b>	
Y/X ratio of Font.....	15



