



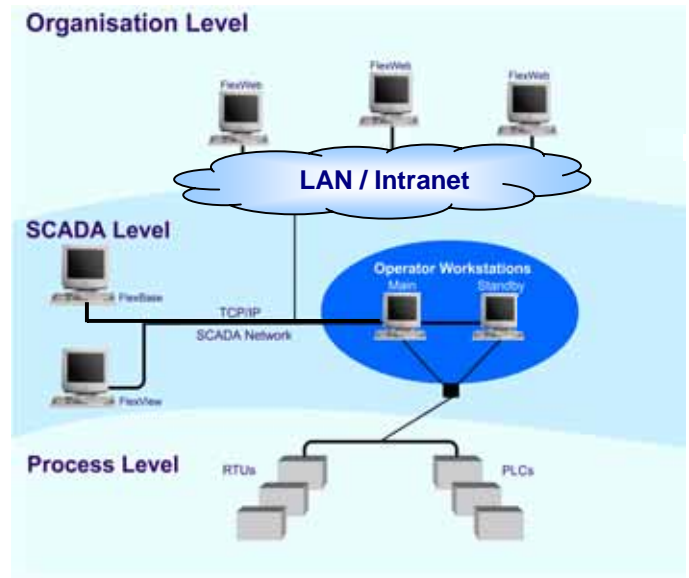
DATAAC FlexWeb

Product Overview

FlexWeb allows standard web browser access to RealFlex SCADA data.

Used in conjunction with FlexBase SQL database server, it enables authorized users across the whole organization to individually select and extract SCADA data of interest to them.

Due to the buffer provided by FlexBase, the security and integrity of the RealFlex SCADA system is not compromised



Features & Benefits

Access SCADA Data Using a Browser

Feature:

Data from FlexBase can be distributed throughout the organization in a user-friendly format using a standard Web browser.

Benefit:

Relevant data can be made available to all authorized users on the organization's Intranet without installing any special software. By using web browsers already installed on most PCs, this provides a quick and cost effective method of data distribution.

Easy Creation of Web Pages

Feature:

All tools are supplied to allow the creation and modification of web pages containing live and historical data from the SCADA system.

Benefit:

Create web pages using drag and drop techniques. This allows users to create web pages with only minimal training and without any web programming experience.

Presentation of Data

Feature:

Data from the SCADA system is accessible to users with only a minimal knowledge of the SCADA system.

Benefit:

The users can simply access their data by selecting a favorite from their standard Web browser. Data is presented in a user-friendly format using values, trends, tables, video, etc. and users simply click on links to move between pages.

Automatic Synchronization

Feature:

Automatic synchronization with the SCADA database ensures that all user information is fully up to date.

Benefit:

Due to FlexWeb's tight integration with FlexBase, all SCADA database changes are automatically made available to the users - no manual updating is required. This eliminates the possibility of human error and maintains the integrity of the system.

Data Integrity

Feature:

The FlexWeb user will experience no missing data i.e. no 'gaps' in the trend graphs.

Benefit:

FlexBase is the source of data for FlexWeb. FlexBase has the capability to automatically recover any data it is missing from RealFlex, for example, during a period when it was offline. This ensures FlexWeb presents a full set of 'primary source' (unaltered) data to the user.

Data on from Multiple Sources

Feature:

FlexWeb pages can display information from different FlexBase databases and from multiple video sources.

Benefit:

A single Web page can concentrate information from different regions and video inputs or from multiple sites.

Multiple User Groups

Feature:

The FlexWeb administrator tool allows the creation of user accounts, passwords and folders for Web pages.

Benefit:

Different groups can work with their own Web pages to provide only relevant information for each group. For example, a Maintenance group only sees pages relevant to maintenance of the system.

Display of Video

Feature:

FlexWeb allows display of video from network video (camera or server) which is available on the organization Intranet.

Benefit:

The Web pages can be configured to show video on pop-up windows. The user can choose to view video from remote sites by clicking on a link (note: this requires that the site video camera be connected to the organization's Intranet).



Sample FlexWeb Homepage

DATAAC Technologies Ltd.
 22001 Northpark Drive, Suite 200
 King wood, TEXAS 77339
 Tel: +1-281-348-1038
 Fax: +1-281-348-2340
 E-mail: sales@dataac-technologies.com
 Web: www.DataacOnline.com